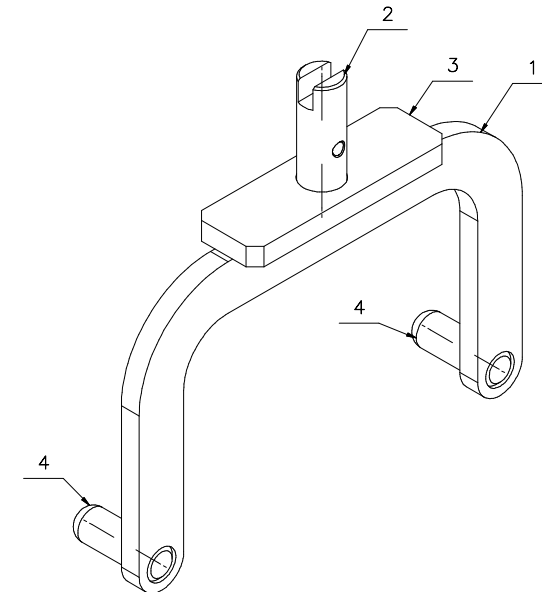
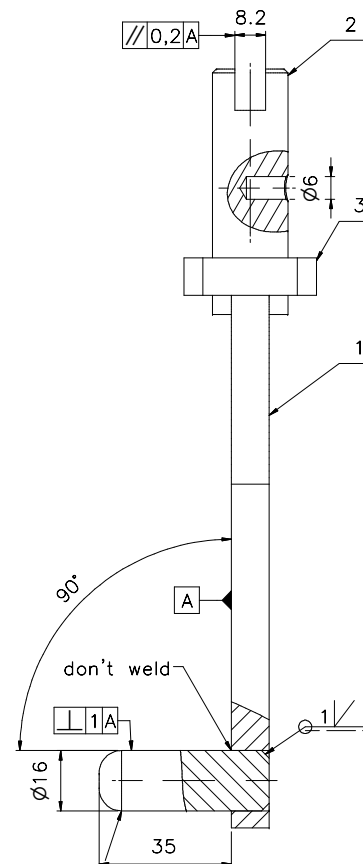
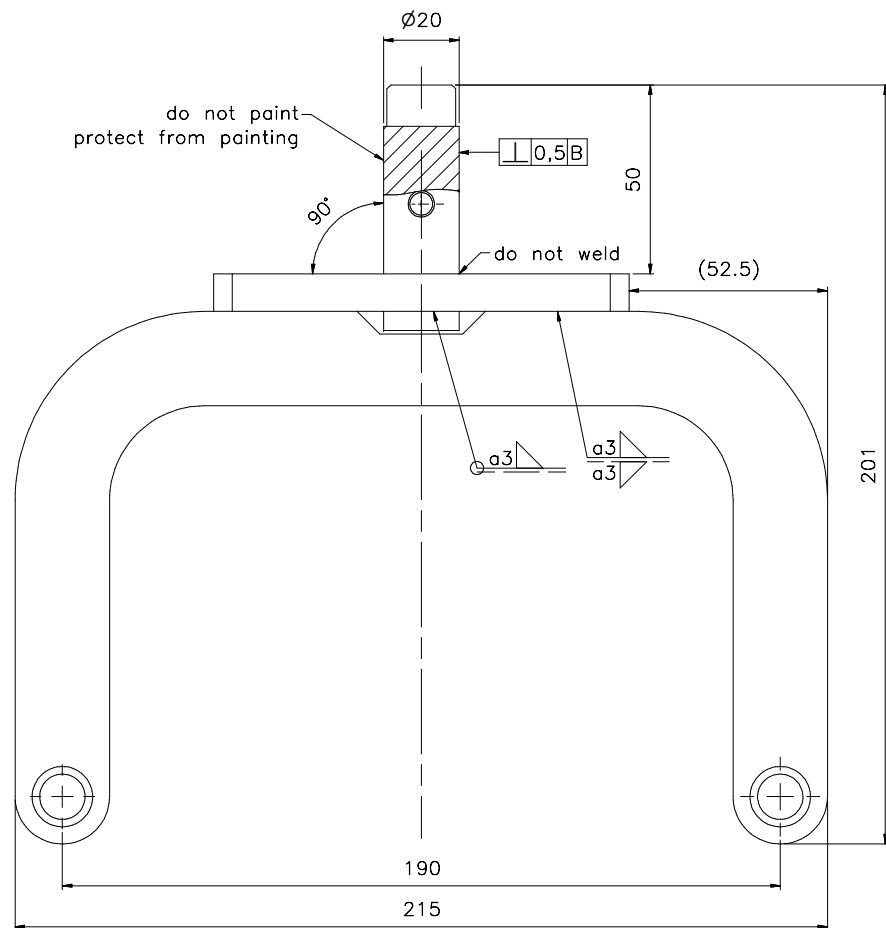


Comments:

1. Check assembly.
2. Perform Assembly as shown in drawing.
3. Make a trial motions of individual mechanisms and moving parts in order to verify the correctness of installation.
4. Protect against damage and corrosion on time waiting for the main installation.

4	2	Spring-type pin x 16 A	ISO 8752 - 6	0	Steel	0	
3	1	Clutch B	SL30 00.02.00	0		1.25	
2	1	Clutch A	SL30 00.01.00	0		1.32	
1	1	Pantograph	SL30 01.00.00	0		5.19	
Item	Qty.	Name of part	Drawing number, standard	Rev.	Material	Weight Tpcs kg	Comments
Inventor:							
		Weight 1 set	Drawing name				
		7,8 kg	Sling lift 30kg Main assembly				
Engn.	2016-06-12	papacad	Drawing number				
Draw.	2016-06-12	papacad	SL30 00.00.00				
Check.	2016-06-12	papacad	Revision				
Ver.	2016-06-12	papacad	1 / 1				
Appr.	2016-06-12	papacad					
		papacad	Scale				
		3D & 2D CAD PROJECTS free & purchase	1 : 2				
			Format				
			A1				
			Sheet				
			1 / 1				



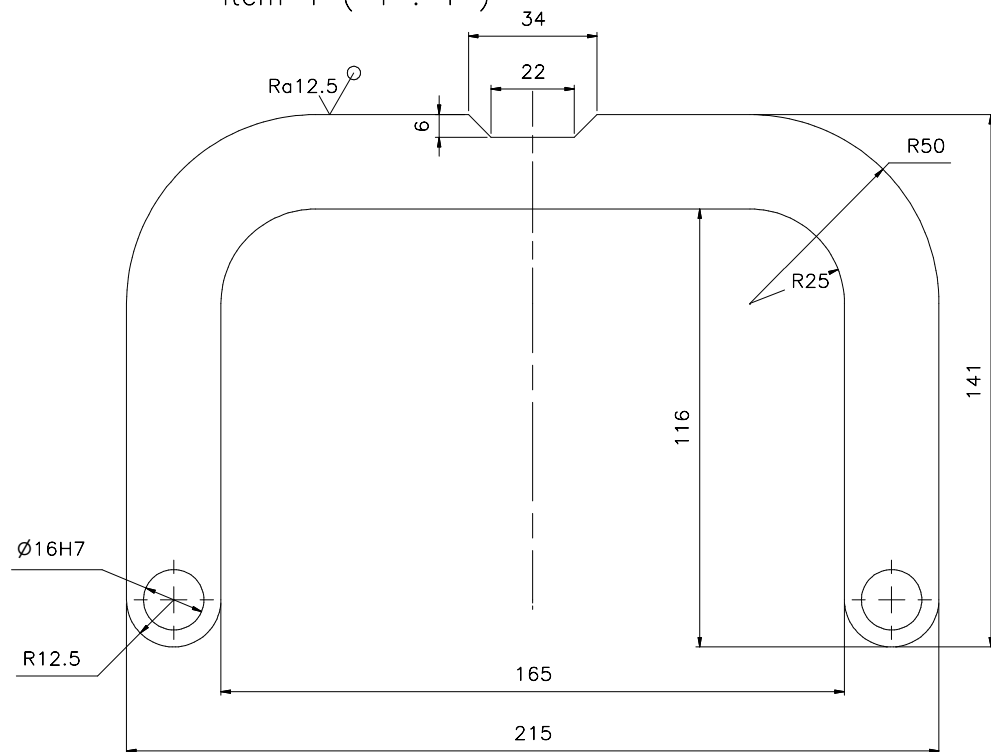
do not point  
protect from painting

#### Comments:

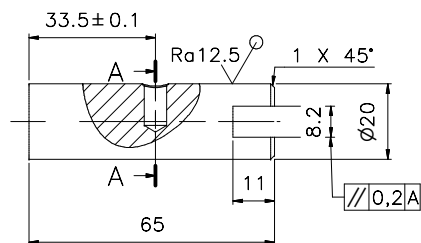
- Blunt sharp edges .
- Requirements for welding according to ISO 3834-3:2005.
- Dimensions non-tolerated for machined parts accordance with DIN EN 22768: 1999 Class tolerance m.
- Dimensions tolerated for welded structures perform under EN ISO 13920 in tolerance class.
- All dimensions shown without allowances for machining.
- The roughness of the holes Ra6.3 – unless indicated otherwise.
- Clean the surfaces for painting to grade
  - Primer – min. paint coating thickness (microns)
  - Topcoat RAL:
    - The number of layers –
    - Minimum thickness of paint coating for respectively individual layers (um) –

4	2	Bar Ø16, L=45	EN ISO 10060	0	S355JR	0.07	
3	1	Plate 10x35x110	EN ISO 10029	0	S355JR	0.27	
2	1	Bar Ø20, L=65	EN ISO 10060	0	S355JR	0.14	
1	1	Plate 10x141x215	EN ISO 10029	0	S355JR	0.76	
Item	Qty.	Name of part	Drawing number, standard	Rev.	Material	Weight 1pcs. kg	Comments
Investor:							
		Weight 1 set	Drawing name				
		1,3 kg	Sling lift 30kg				
Engin.	2016-08-24	papacad	Clutch A				
Draw.	2016-08-24	papacad					
Check.	2016-08-24	papacad					
Ver.	2016-08-24	papacad					
Appr.	2016-08-24	papacad					
papacad			Drawing number		Revision		
3D & 2D CAD PROJECTS free & purchase			SL30 00.01.00		0		
			www.papacad.com		Scale		
					1 : 1		
					Format		
					A2		
					Sheet		
					1 / 2		

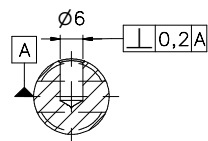
Item 1 ( 1 : 1 )



Item 2 ( 1 : 1 )



A-A ( 1 : 1 )

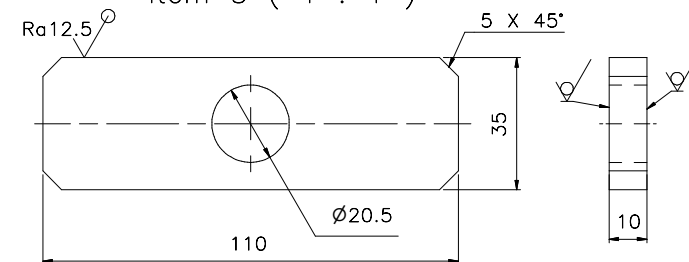


Annotations:

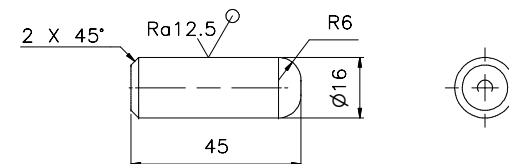
1. Sharpen edges – blunt.
2. Non-tolerated dimmenions make with tolerance classmK .
3. All dimmension are shown without machining tolerances.
4. The roughness of the holes Ra6.3 unless otherwise indicated .

Ra12.5 (✓)

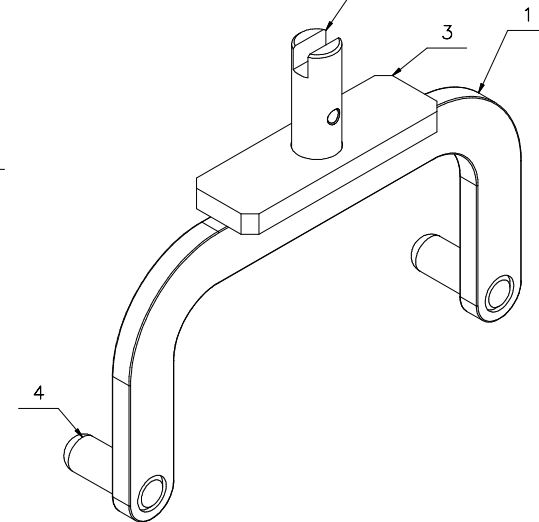
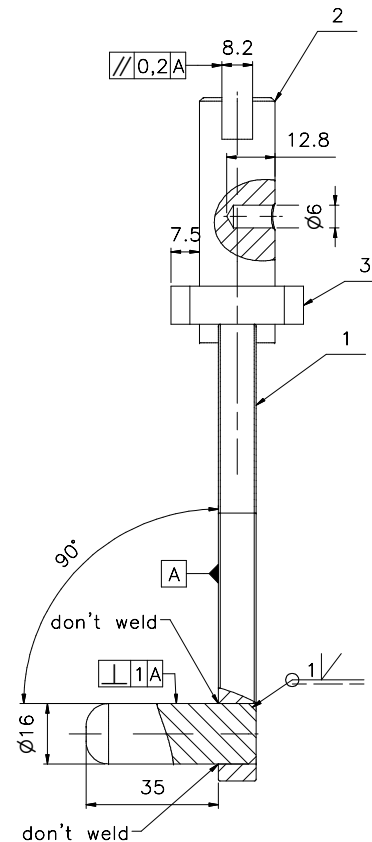
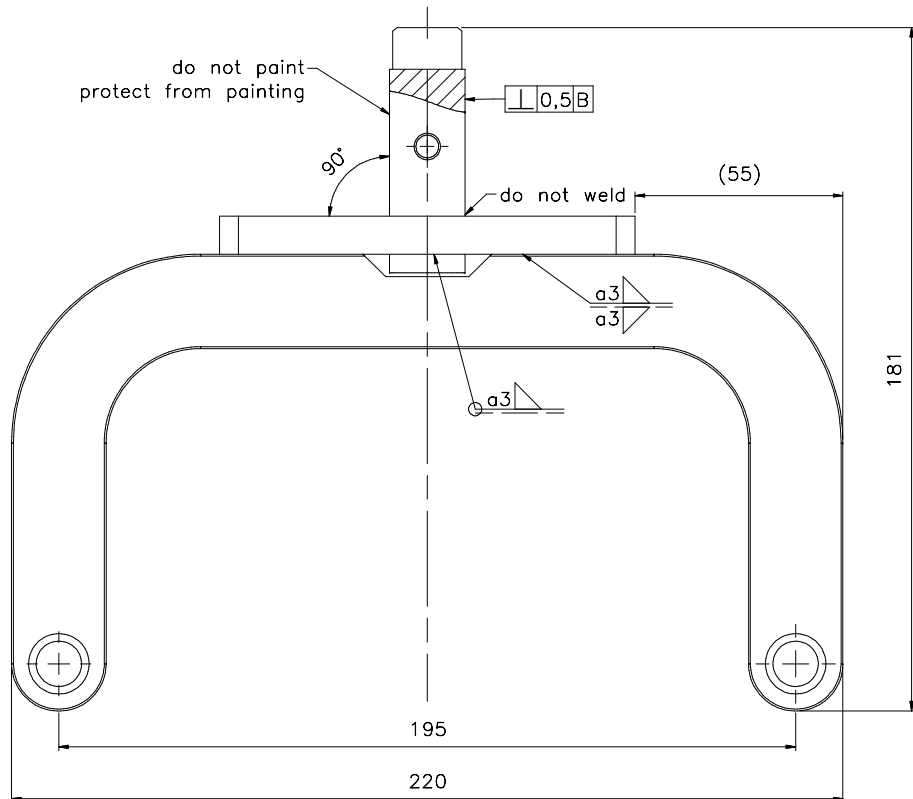
Item 3 ( 1 : 1 )



Item 4 ( 1 : 1 )



4	2	Bar Ø16, L=45	EN ISO 10060	0	S355JR	0.07	
3	1	Plate 10x35x110	EN ISO 10029	0	S355JR	0.27	
2	1	Bar Ø20, L=65	EN ISO 10060	0	S355JR	0.14	
1	1	Plate 10x141x215	EN ISO 10029	0	S355JR	0.76	
Item	Qty.	Name of part	Drawing number, standard	Rev.	Material	Weight 1pcs. kg	Comments
Investor:							
		Weight 1 set 1.3 kg	Drawing name Sling lift 30kg				
Engin.	2016-08-24	papacad	Drawing number SL30 00.01.00				
Draw.	2016-08-24	papacad					
Check.	2016-08-24	papacad					
Ver.	2016-08-24	papacad					
Appr.	2016-08-24	papacad	Revision 0				
papacad			www.papacad.com	Scale 1 : 1	Format A2	Sheet 2 / 2	
3D & 2D CAD PROJECTS free & purchase							



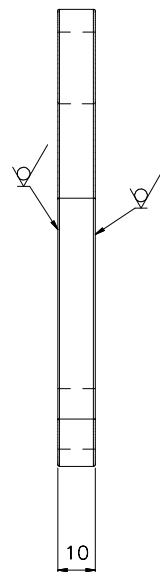
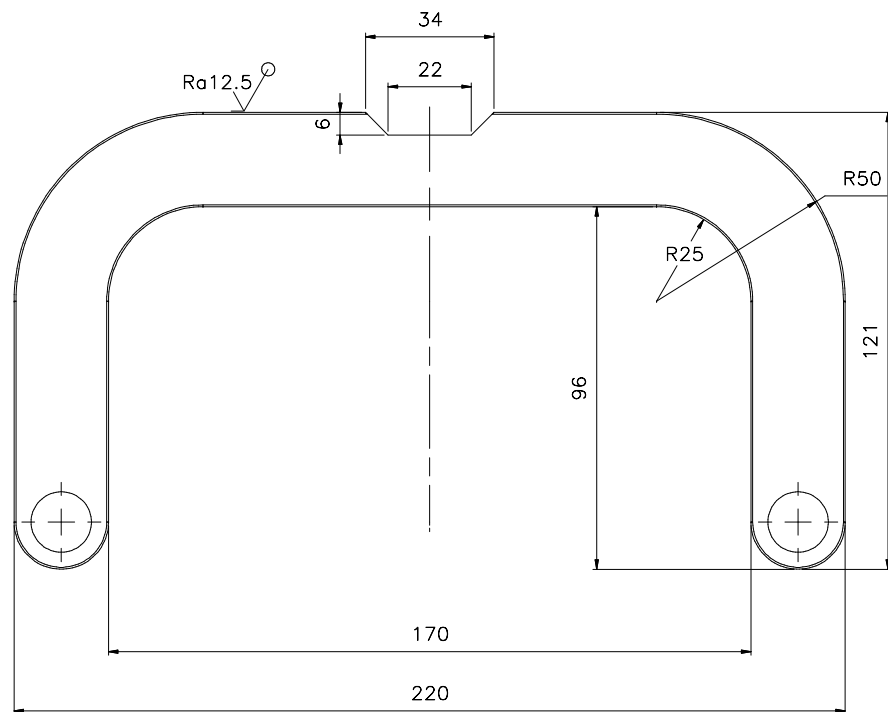
#### Comments:

- Blunt sharp edges .
- Requirements for welding according to ISO 3834-3:2005.
- Dimensions non-tolerated for machined parts accordance with DIN EN 22768: 1999 Class tolerance m.
- Dimensions tolerated for welded structures perform under EN ISO 13920 in tolerance class.
- All dimensions shown without allowances for machining.
- The roughness of the holes  $Ra6.3$  - unless indicated otherwise.
- Clean the surfaces for painting to grade
  - Primer - min. paint coating thickness (microns)
  - Topcoat RAL:
    - The number of layers -
    - Minimum thickness of paint coating for respectively individual layers (um) -

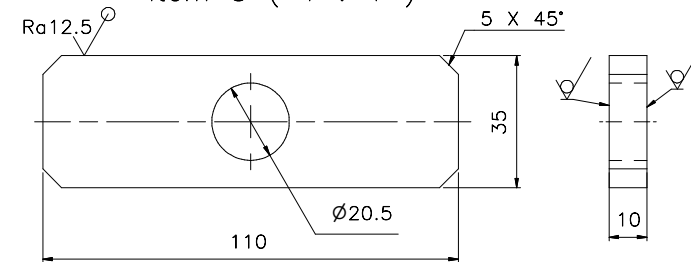
4	2	Bar Ø16, L=45	EN ISO 10060	0	S355JR	0.07	
3	1	Plate 10x35x110	EN ISO 10029	0	S355JR	0.27	
2	1	Bar Ø20, L=65	EN ISO 10060	0	S355JR	0.14	
1	1	Plate 10x121x220	EN ISO 10029	0	S355JR	0.69	
Item	Qty.	Name of part	Drawing number, standard	Rev.	Material	Weight 1pcs. kg	Comments
Investor:							
		Weight 1 set 1.2 kg	Drawing name Sling lift 30kg				
Engin.	2016-09-05	papacad	Clutch B				
Draw.	2016-08-24	papacad					
Check.	2016-09-05	papacad					
Ver.	2016-08-24	papacad					
Appr.	2016-08-24	papacad					
papacad			Drawing number SL30 00.02.00			Revision 0	
3D & 2D CAD PROJECTS free & purchase			www.papacad.com		Scale 1 : 1	Format A2	Sheet 1 / 2

Item 1 ( 1 : 1 )

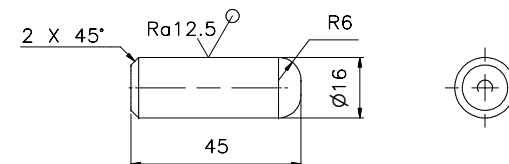
Ra12.5 (✓)



Item 3 ( 1 : 1 )

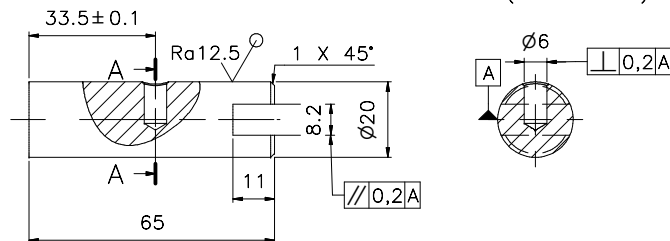


Item 4 ( 1 : 1 )



Item 2 ( 1 : 1 )

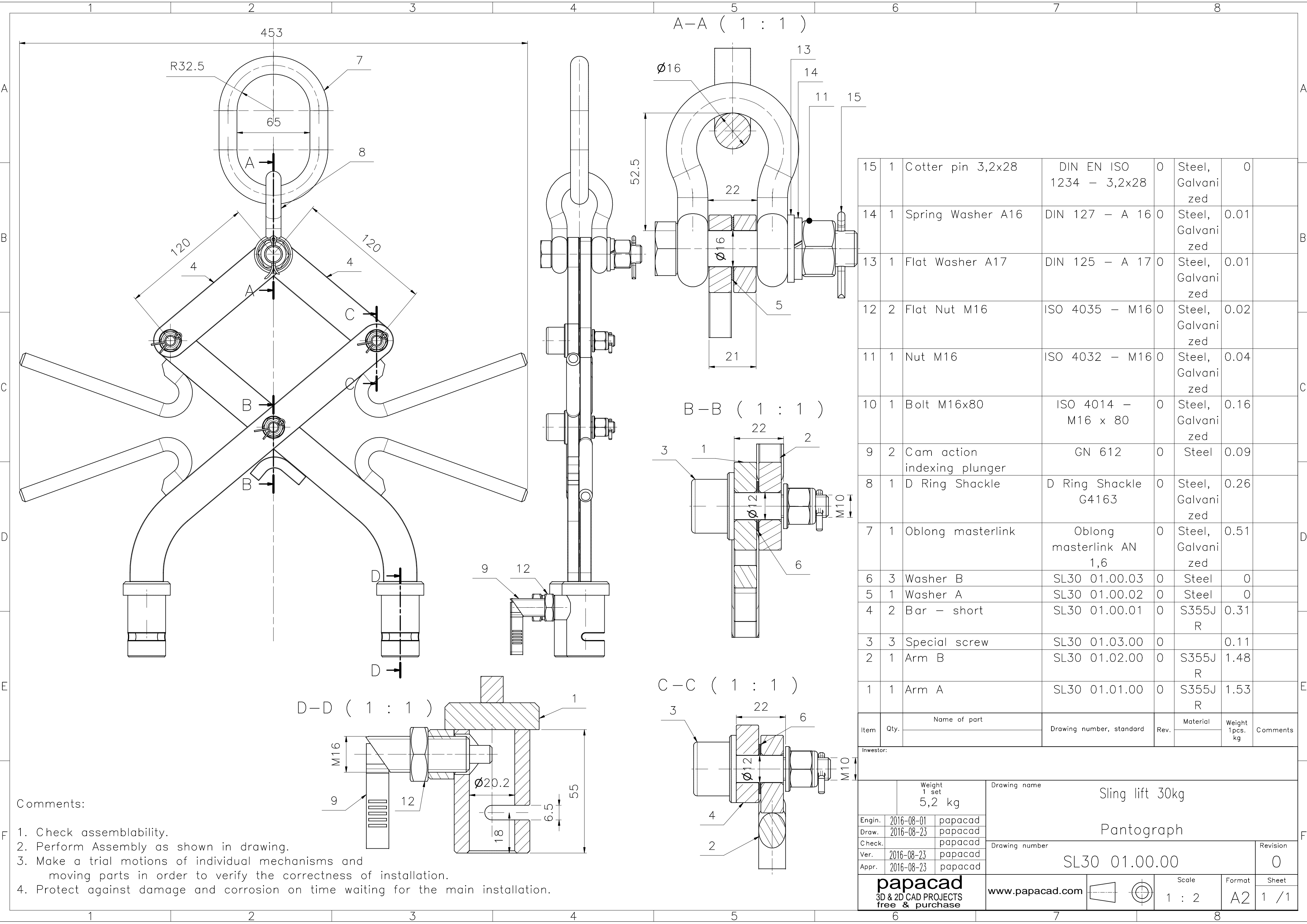
A-A ( 1 : 1 )



## Annotations:

- Sharpen edges – blunt.
- Non-tolerated dimensions make with tolerance classmK .
- All dimensions are shown without machining tolerances.
- The roughness of the holes Ra6.3 unless otherwise indicated .

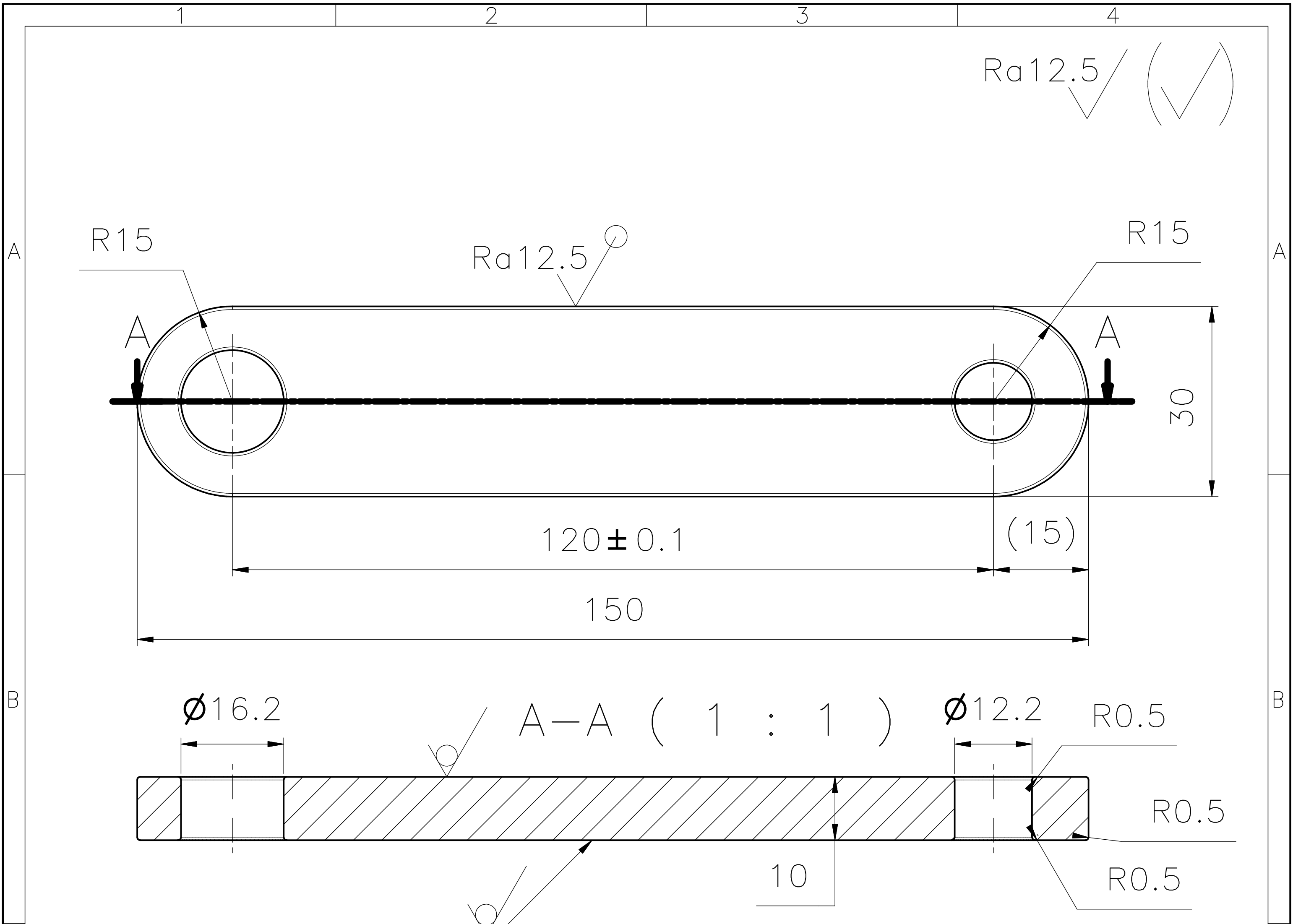
4	2	Bar Ø16, L=45	EN ISO 10060	0	S355JR	0.07	
3	1	Plate 10x35x110	EN ISO 10029	0	S355JR	0.27	
2	1	Bar Ø20, L=65	EN ISO 10060	0	S355JR	0.14	
1	1	Plate 10x121x220	EN ISO 10029	0	S355JR	0.69	
Item	Qty.	Name of part	Drawing number, standard	Rev.	Material	Weight 1pcs. kg	Comments
Investor:							
		Weight 1 set 1.2 kg	Drawing name Sling lift 30kg				
Engin.	2016-09-05	papacad	Drawing number SL30 00.02.00				
Draw.	2016-08-24	papacad					
Check.	2016-09-05	papacad					
Ver.	2016-08-24	papacad					
Appr.	2016-08-24	papacad					Revision 0
papacad 3D & 2D CAD PROJECTS free & purchase			www.papacad.com		Scale 1 : 1	Format A2	Sheet 2 / 2



Comments:

1. Check assemblability.
2. Perform Assembly as shown in drawing.
3. Make a trial motions of individual mechanisms and moving parts in order to verify the correctness of installation.
4. Protect against damage and corrosion on time waiting for the main installation.

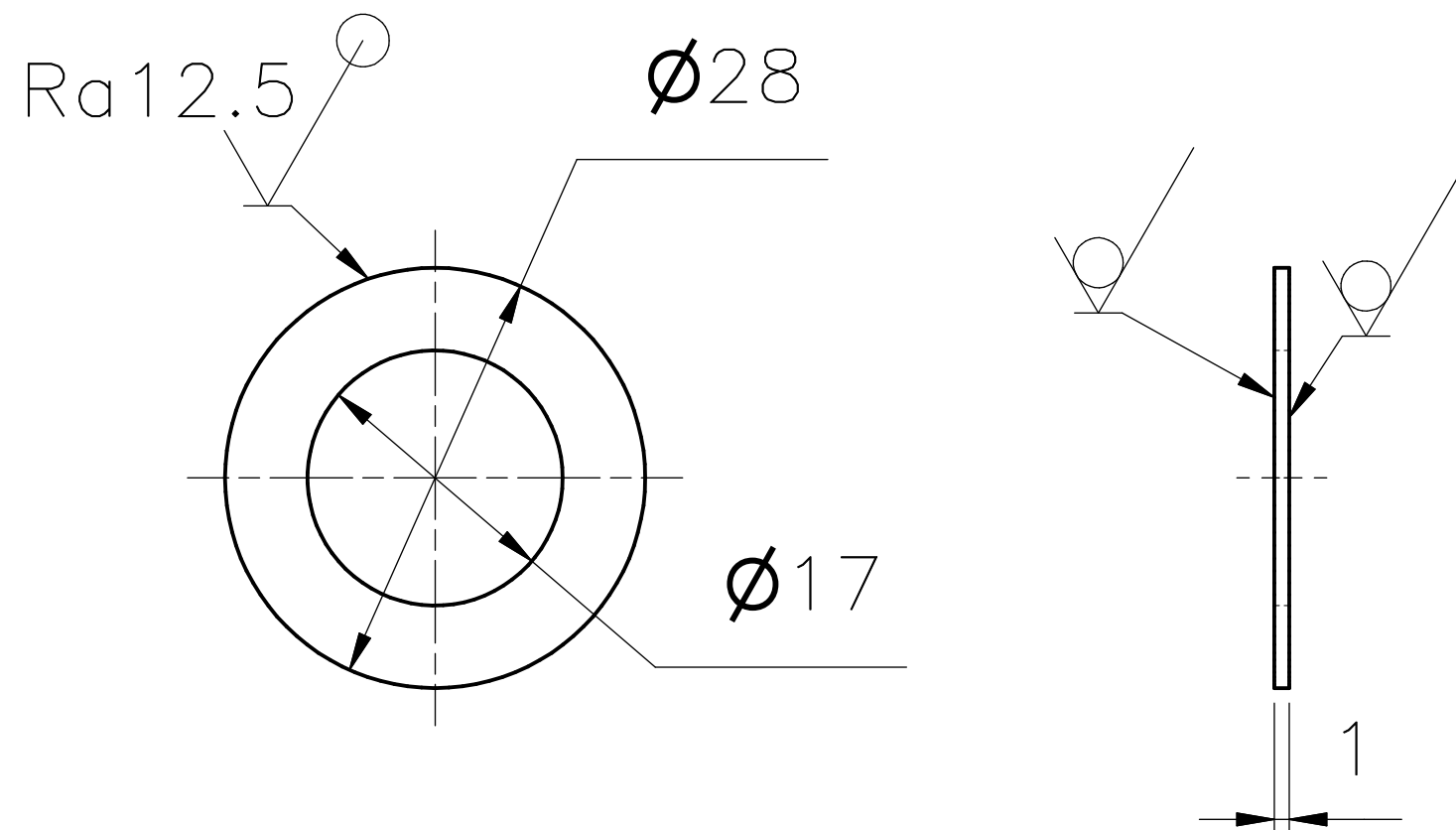
15	1	Cotter pin 3,2x28	DIN EN ISO 1234 - 3,2x28	0	Steel, Galvani- zed	0	
14	1	Spring Washer A16	DIN 127 - A 16	0	Steel, Galvani- zed	0.01	
13	1	Flat Washer A17	DIN 125 - A 17	0	Steel, Galvani- zed	0.01	
12	2	Flat Nut M16	ISO 4035 - M16	0	Steel, Galvani- zed	0.02	
11	1	Nut M16	ISO 4032 - M16	0	Steel, Galvani- zed	0.04	
10	1	Bolt M16x80	ISO 4014 - M16 x 80	0	Steel, Galvani- zed	0.16	
9	2	Cam action indexing plunger	GN 612	0	Steel	0.09	
8	1	D Ring Shackle	D Ring Shackle G4163	0	Steel, Galvani- zed	0.26	
7	1	Oblong masterlink	Oblong masterlink AN 1,6	0	Steel, Galvani- zed	0.51	
6	3	Washer B	SL30 01.00.03	0	Steel	0	
5	1	Washer A	SL30 01.00.02	0	Steel	0	
4	2	Bar - short	SL30 01.00.01	0	S355J R	0.31	
3	3	Special screw	SL30 01.03.00	0		0.11	
2	1	Arm B	SL30 01.02.00	0	S355J R	1.48	
1	1	Arm A	SL30 01.01.00	0	S355J R	1.53	
Item	Qty.	Name of part	Drawing number, standard	Rev.	Material	Weight 1pcs. kg	Comments
Investor:							
		Weight 1 set 5,2 kg	Drawing name Sling lift 30kg				
Engin.	2016-08-01	papacad	Drawing number SL30 01.00.00				
Draw.	2016-08-23	papacad					
Check.		papacad					
Ver.	2016-08-23	papacad					
Appr.	2016-08-23	papacad	Revision 0				
papacad		3D & 2D CAD PROJECTS free & purchase	www.papacad.com	Scale 1 : 2	Format A2	Sheet 1 / 1	



- Annotations:
- 1. Sharpen edges – blunt.
  - 2. Non–tolereted dimmenions make with tolerance classmK .
  - 3. All dimmension are shown without machining tolerances.
  - 4. The roughness of the holes Ra6.3 unless otherwise indicated a

1	1	Bar 10x30x150	EN ISO 10029	0	S355JR	0.31	
Item	Qty.	Name of part	Drawing number, standard	Rev.	Material	Weight 1pcs. kg	Comments
Inwestor:							
		Weight 1 set 0,31 kg	Drawing name Sling lift 30kg				
Engin.	2016-08-23	papacad	Drawing number SL30 01.00.01				
Draw.	2016-06-04	papacad					
Check.	2016-08-23	papacad					
Ver.	2016-06-04	papacad					
Appr.	2016-06-04	papacad					
Revision			0				
papacad			www.papacad.com		Scale 1 : 1	Size A4	Sheet 1 / 1
3D & 2D CAD PROJECTS free & purchase							

Ra12.5 ✓ (✓)

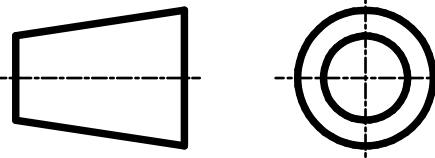


1. Sharpen edges – blunt.
2. Non-tolerated dimensions make with tolerance class mK .
3. All dimensions are shown without machining tolerances.
4. The roughness of the holes  $R_a 6.3$  unless otherwise indicated.

1	1	Sheet 1xØ28	EN ISO 10029		0	Steel	0		
Item	Qty.	Name of part	Drawing number, standard	Rev.	Material	Weight 1pcs. kg	Comments		
Inwestor:									
		Weight 1 set 0,00 kg	Drawing name  Sling lift 30kg  Washer A						
Engin.	2016-08-23	papacad							
Draw.	2016-08-23	papacad	Drawing number  SL30 01.00.02						Revision  0
Check.	2016-08-23	papacad							
Ver.	2016-08-23	papacad							
Appr.	2016-08-23	papacad							
<div>papacad</div> <div>3D &amp; 2D CAD PROJECTS</div> <div>free &amp; purchase</div>			www.papacad.com		Scale		Size	Sheet	
					1 : 1		A4	1 / 1	

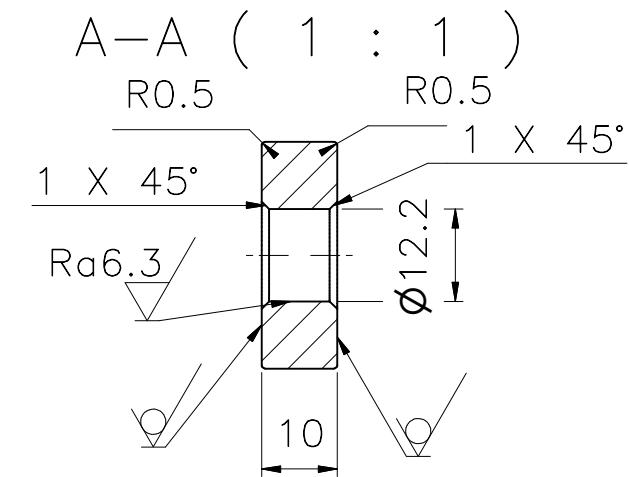


1. Sharpen edges – blunt.
2. Non-tolerated dimensions make with tolerance class mK .
3. All dimensions are shown without machining tolerances.
4. The roughness of the holes  $R_a 6.3$  unless otherwise indicated.

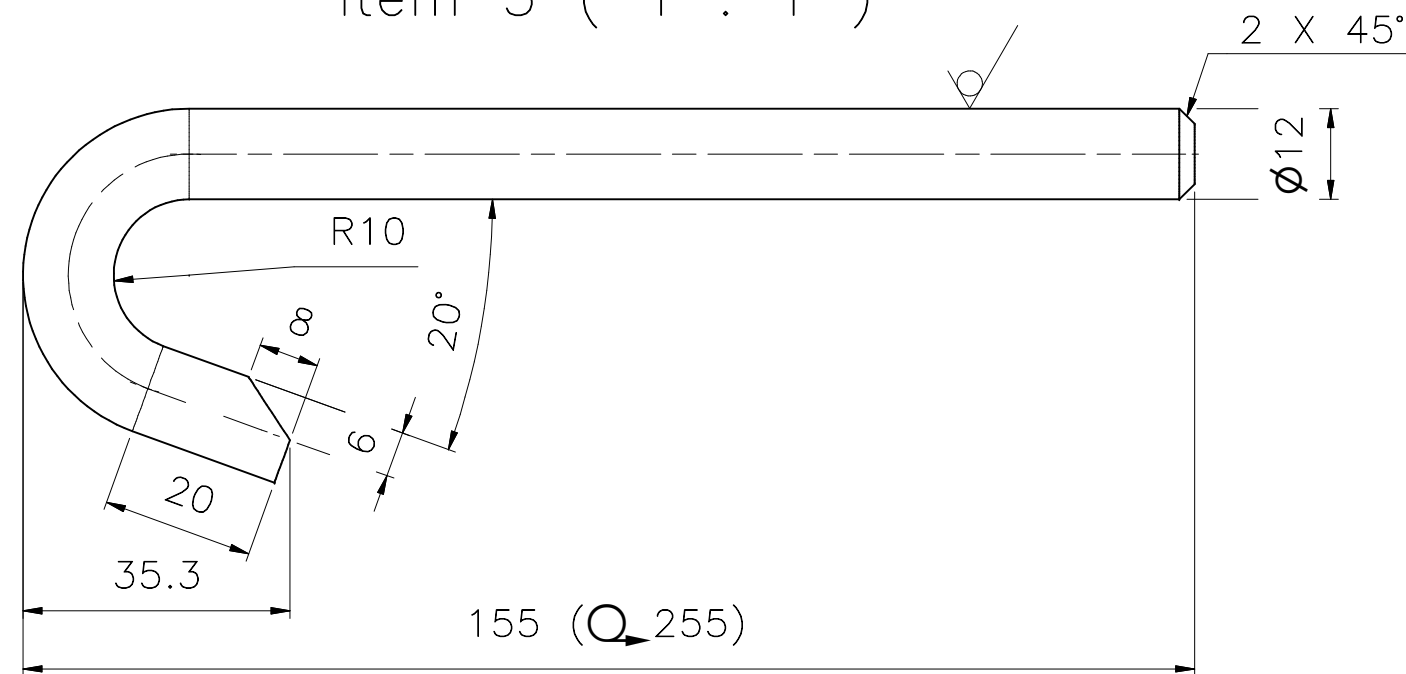
1	1	Sheet 1xØ22	EN ISO 10029		0	Steel	0		
Item	Qty.	Name of part	Drawing number, standard	Rev.	Material	Weight 1pcs. kg	Comments		
Inwestor:									
		Weight 1 set 0,00 kg	Drawing name  Sling lift 30kg  Washer B						
Engin.	2016-08-23	papacad							
Draw.	2016-08-23	papacad	Drawing number  SL30 01.00.03						Revision  0
Check.	2016-08-23	papacad							
Ver.	2016-08-23	papacad							
Appr.	2016-08-23	papacad							
<b>papacad</b> 3D & 2D CAD PROJECTS free & purchase			www.papacad.com		Scale	Size	Sheet		
					1 : 1	A4	1 / 1		



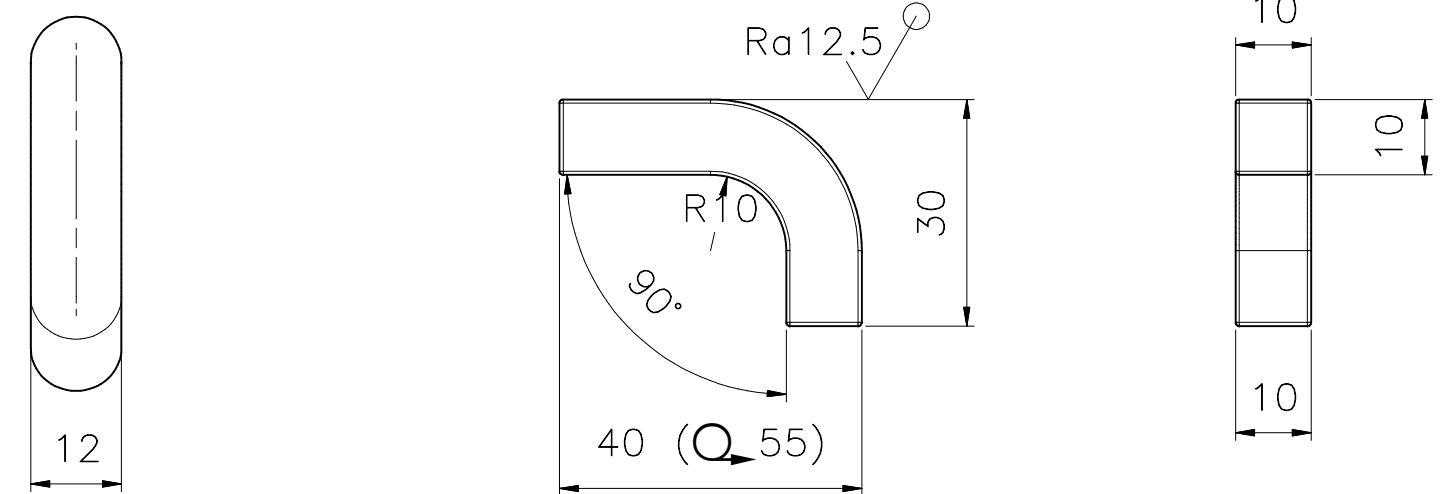
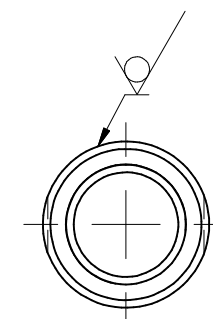
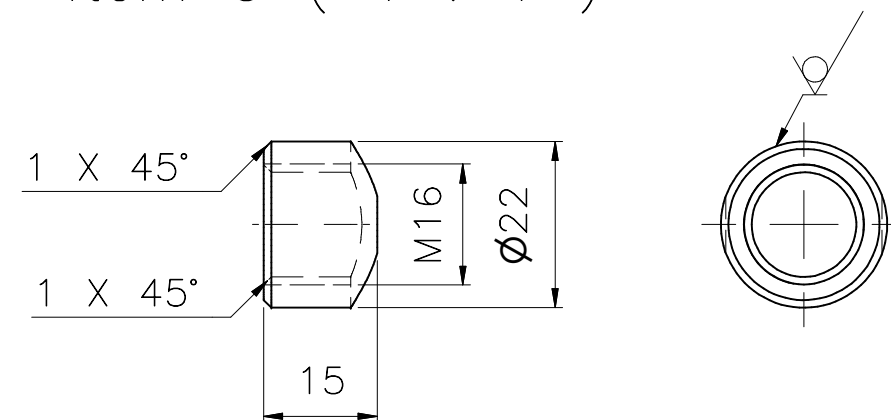
Ra12.5 ✓ (✓)



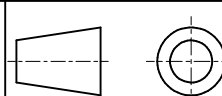
Item 3 ( 1 : 1 )



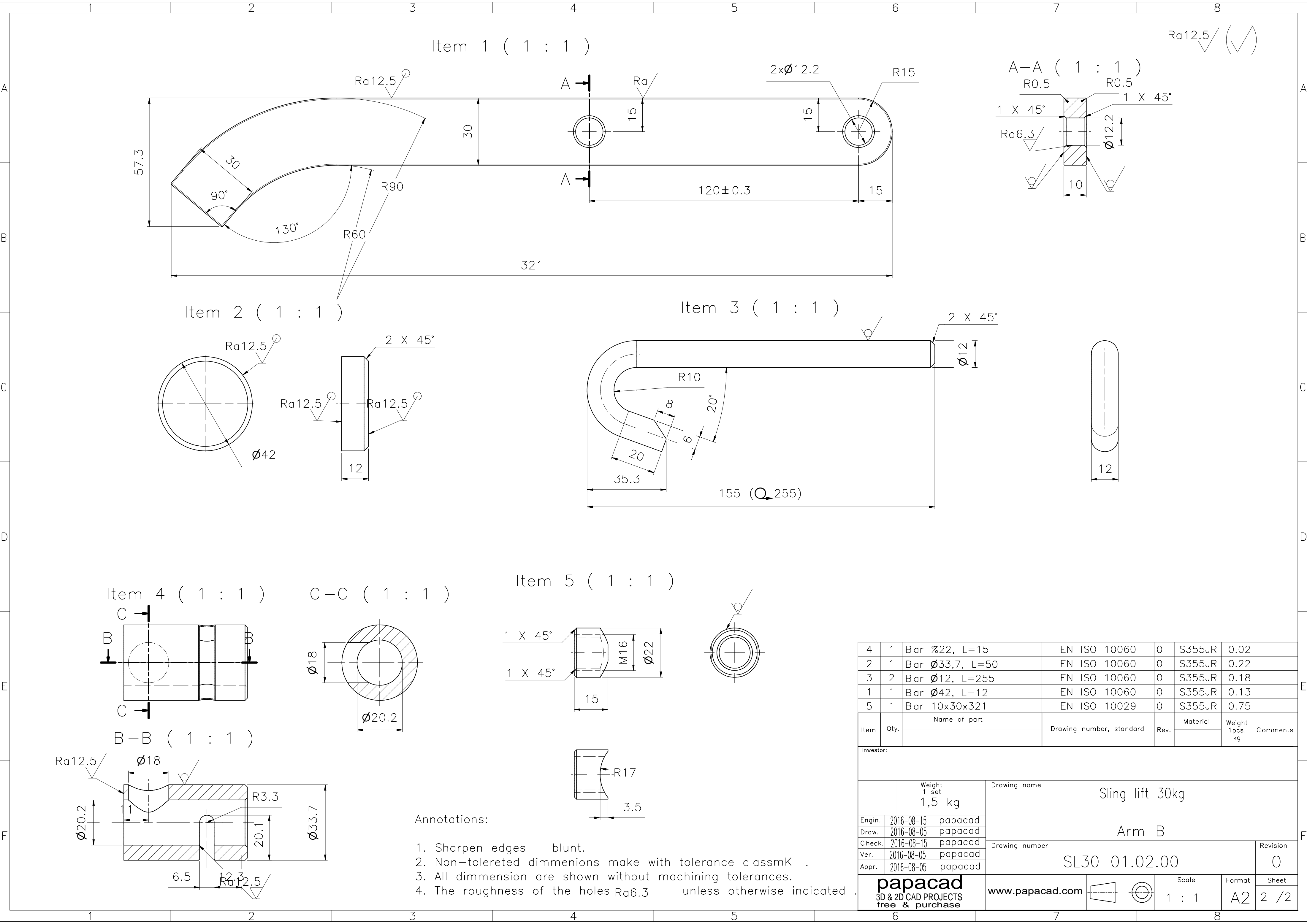
Item 6 ( 1 : 1 )

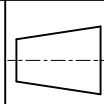
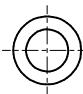

$$\text{C}-\text{C} \quad (1:1)$$

$$B-B \quad (1:1)$$

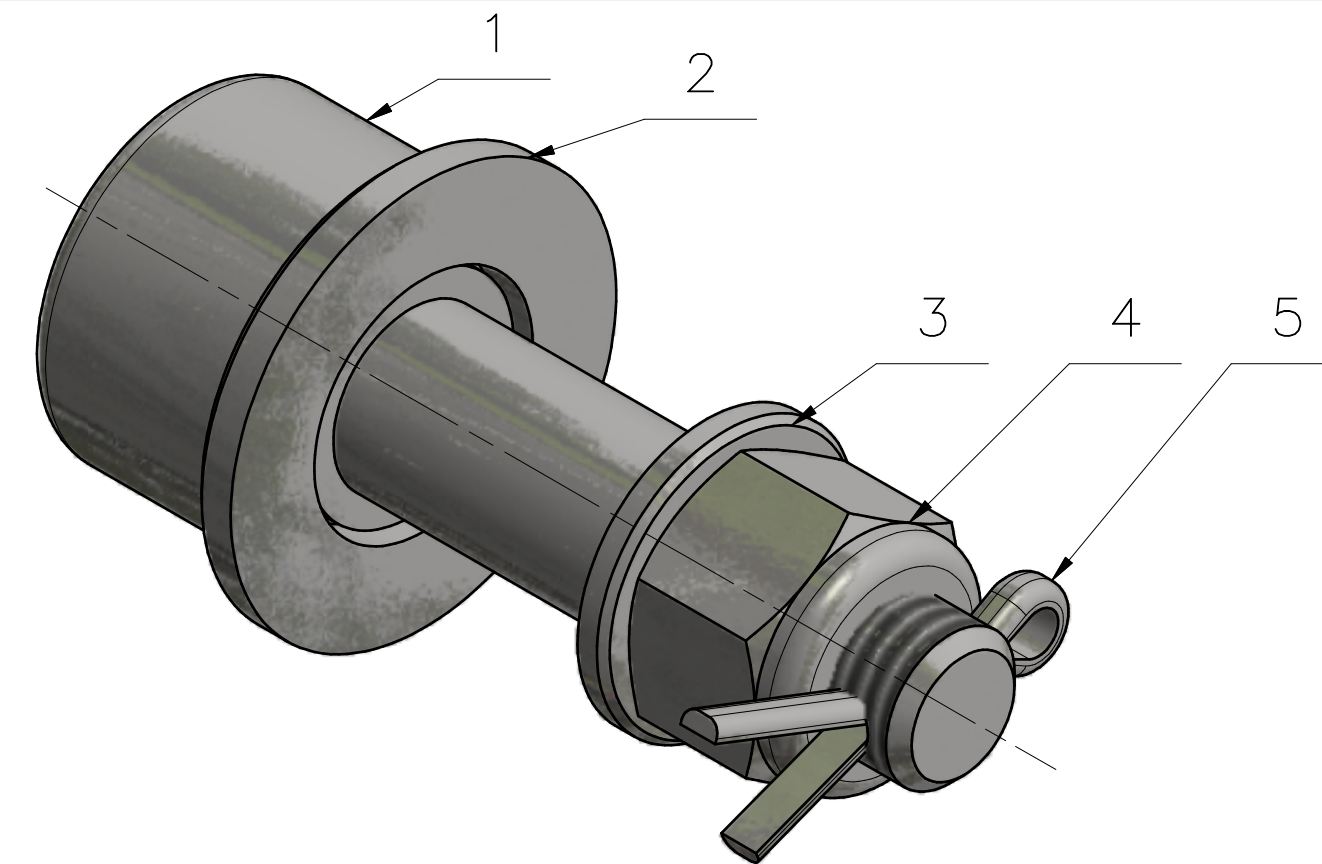
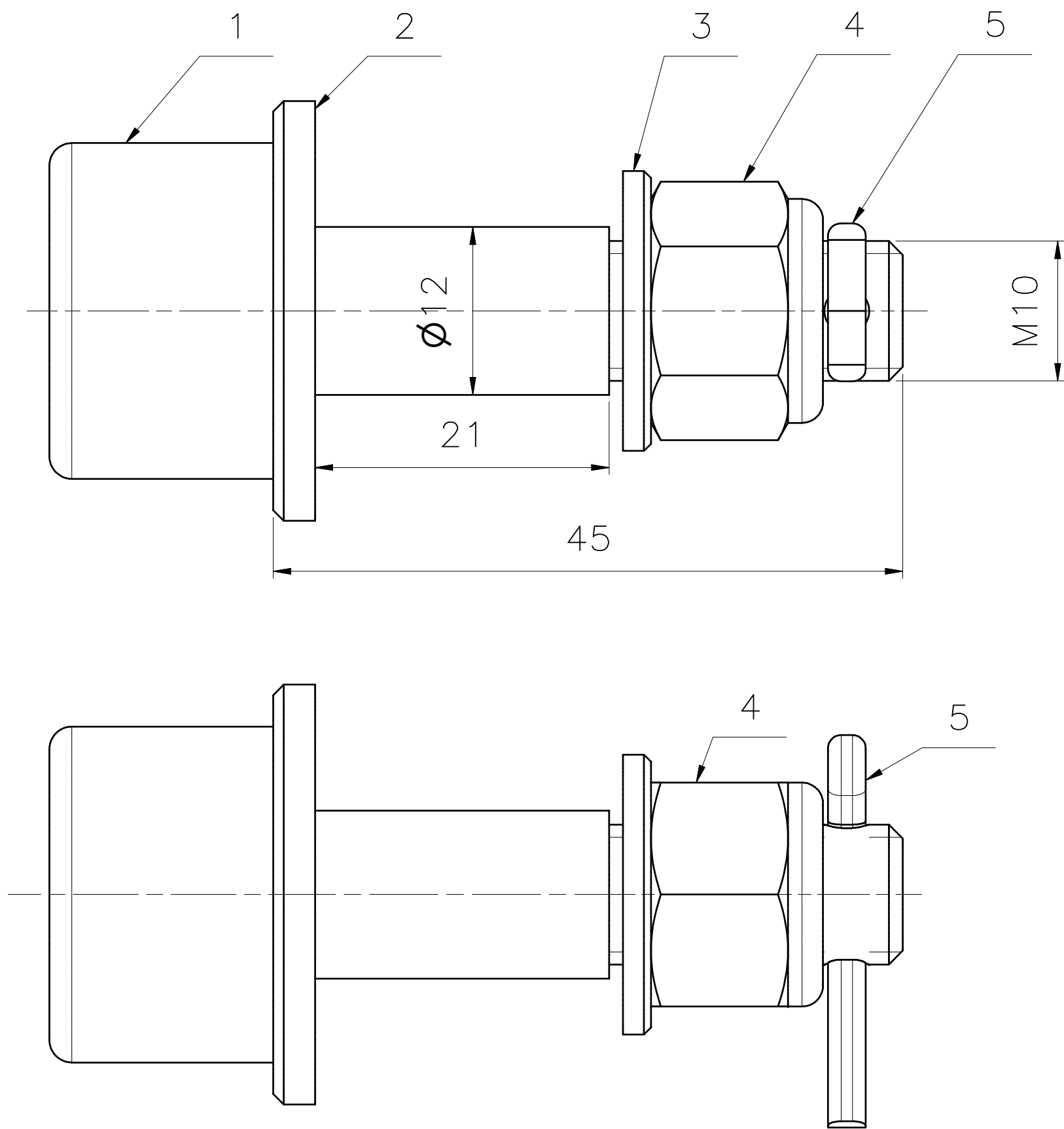

1. Sharpen edges – blunt.
2. Non-tolerated dimensions make with tolerance class  $MK$  .
3. All dimensions are shown without machining tolerances.
4. The roughness of the holes  $Ra6.3$  unless otherwise indicated .

6	1	Bar 10x10x55	EN ISO 10029	0	S355JR	0.04	
5	1	Bar %22, L=15	EN ISO 10060	0	S355JR	0.02	
4	1	Bar $\varnothing 33,7$ , L=50	EN ISO 10060	0	S355JR	0.22	
3	2	Bar $\varnothing 12$ , L=255	EN ISO 10060	0	S355JR	0.18	
2	1	Bar $\varnothing 42$ , L=12	EN ISO 10060	0	S355JR	0.13	
1	1	Bar 10x30x321	EN ISO 10029	0	S355JR	0.75	
Item	Qty.	Name of part	Drawing number, standard	Rev.	Material	Weight 1pcs. kg	Comments
Inwestor:							
		Weight 1 set 1,5 kg	Drawing name  Sling lift 30kg				
Engin.	2016-08-05	papacad	Arm A				
Draw.	2016-08-05	papacad					
Check.	2016-08-05	papacad	Drawing number				Revision
Ver.	2016-08-05	papacad	SL30 01.01.00				0
Appr.	2016-08-05	papacad					
<b>papacad</b> 3D & 2D CAD PROJECTS free & purchase		www.papacad.com		Scale	Format	Sheet	
				1 : 1	A2	2 / 2	



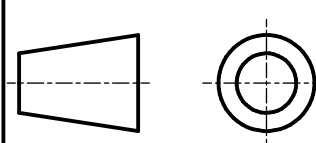


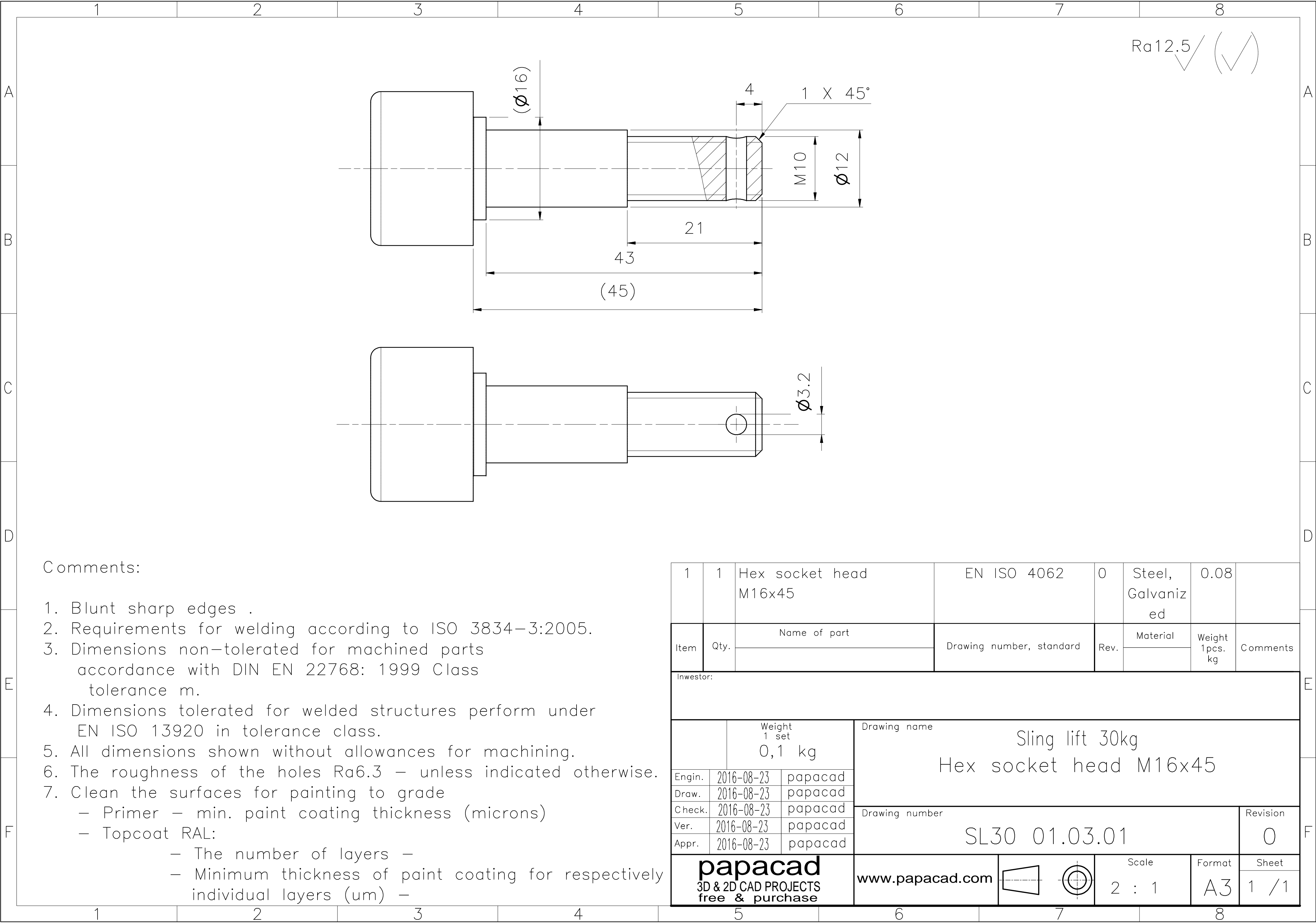
4	1	Bar %22, L=15	EN ISO 10060	0	S355JR	0.02		
2	1	Bar Ø33,7, L=50	EN ISO 10060	0	S355JR	0.22		
3	2	Bar Ø12, L=255	EN ISO 10060	0	S355JR	0.18		
1	1	Bar Ø42, L=12	EN ISO 10060	0	S355JR	0.13		
5	1	Bar 10x30x321	EN ISO 10029	0	S355JR	0.75		
Item	Qty.	Name of part	Drawing number, standard	Rev.	Material	Weight 1pcs. kg	Comments	
Inwestor:								
		Weight 1 set 1,5 kg	Drawing name Sling lift 30kg					
Engin.	2016-08-15	papacad	Arm B					
Draw.	2016-08-05	papacad	Drawing number					
Check.	2016-08-15	papacad	SL30 01.02.00				Revision	
Ver.	2016-08-05	papacad					0	
Appr.	2016-08-05	papacad						
<b>papacad</b> 3D & 2D CAD PROJECTS free & purchase			www.papacad.com			Scale 1 : 1	Format A2	Sheet 2 / 2



### Comments:

1. Blunt sharp edges .
2. Requirements for welding according to ISO 3834-3:2005.
3. Dimensions non-tolerated for machined parts accordance with DIN EN 22768: 1999 Class tolerance m.
4. Dimensions tolerated for welded structures perform under EN ISO 13920 in tolerance class.
5. All dimensions shown without allowances for machining.
6. The roughness of the holes Ra6.3 – unless indicated otherwise.
7. Clean the surfaces for painting to grade
  - Primer – min. paint coating thickness (microns)
  - Topcoat RAL:
    - The number of layers –
    - Minimum thickness of paint coating for respectively individual layers (um) –

5	1	Spli pin 3,2x18	ISO 1234 3,2 x 18	0	Steel, Galvani zed	0	
4	1	Hex nut with torque part	EN ISO 7040-M10	0	Steel, Galvani zed	0.02	
3	1	WasherA10,5	DIN 125-2 - 10,5	0	Steel, Galvani zed	0	
2	1	Washer A17	DIN 125-2 - 17	0	Steel, Galvani zed	0.01	
1	1		SL30 01.03.01	0	Steel, Galvani zed	0.08	
Item	Qty.	Name of part	Drawing number, standard	Rev.	Material	Weight 1pcs. kg	Comments
Inwestor:							
		Weight 1 set 0.1 kg	Drawing name Sling lift 30kg				
Engin.	2016-08-23	papacad	Special screw				
Draw.	2016-08-23	papacad					
Check.	2016-08-23	papacad					
Ver.	2016-08-23	papacad					
Appr.	2016-08-23	papacad					
			Drawing number SL30 01.03.00				Revision 0
papacad 3D & 2D CAD PROJECTS free & purchase			www.papacad.com		Scale 2 : 1	Format A3	Sheet 1 / 1



Comments:

- 1. Blunt sharp edges .
- 2. Requirements for welding according to ISO 3834–3:2005.
- 3. Dimensions non–tolerated for machined parts accordance with DIN EN 22768: 1999 Class tolerance m.
- 4. Dimensions tolerated for welded structures perform under EN ISO 13920 in tolerance class.
- 5. All dimensions shown without allowances for machining.
- 6. The roughness of the holes Ra6.3 – unless indicated otherwise.
- 7. Clean the surfaces for painting to grade
  - Primer – min. paint coating thickness (microns)
  - Topcoat RAL:
    - The number of layers –
    - Minimum thickness of paint coating for respectively individual layers (um) –

1	1	Hex socket head M16x45	EN ISO 4062	0	Steel, Galvanized	0.08	
Item	Qty.	Name of part	Drawing number, standard	Rev.	Material	Weight 1pcs. kg	Comments
Inwestor:							
		Weight 1 set 0,1 kg	Drawing name Sling lift 30kg Hex socket head M16x45				
Engin.	2016-08-23	papacad	Drawing number SL30 01.03.01				Revision 0
Draw.	2016-08-23	papacad					
Check.	2016-08-23	papacad					
Ver.	2016-08-23	papacad					
Appr.	2016-08-23	papacad					
papacad 3D & 2D CAD PROJECTS free & purchase			www.papacad.com		Scale 2 : 1	Format A3	Sheet 1 / 1